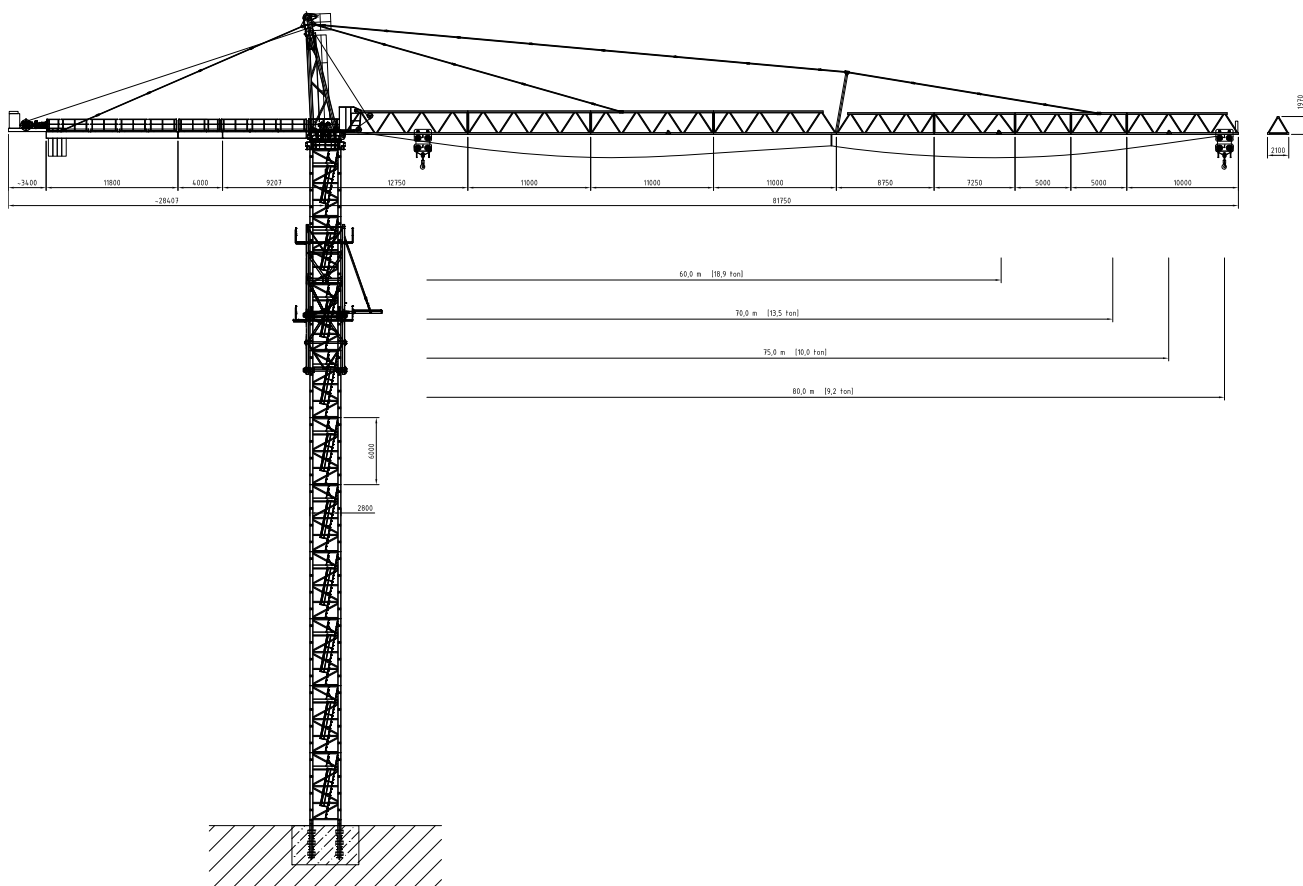


TOWER CRANE

Obendreherkran / Grues à partie tournante
supérieure / Верхнеповоротные краны

BK 1000-40

2/4 - Fall



Subject to modification without prior notice
Edition May, 2009



TÜV - Certificate

F.E.M. 1.001-1987
DIN 15018 H1 - B3

Tower Crane BK 1000-40

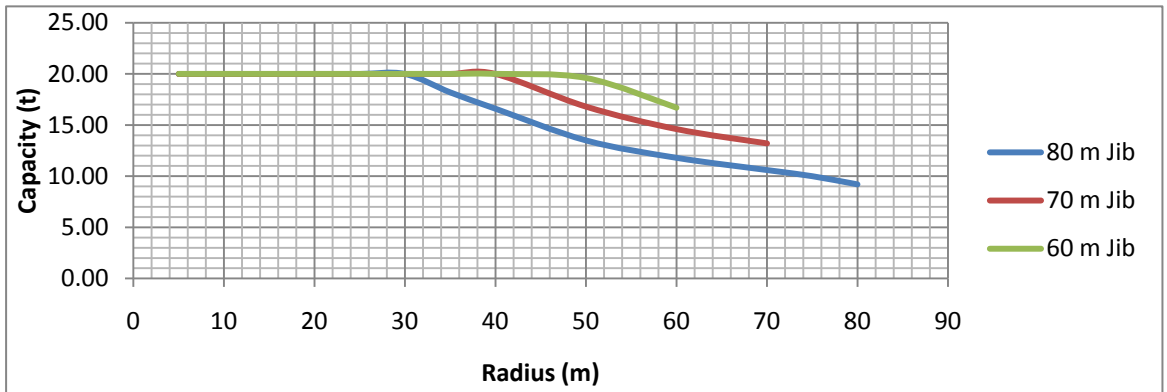
BK 1000-40

2/4 - Fall

| Radius and Capacity

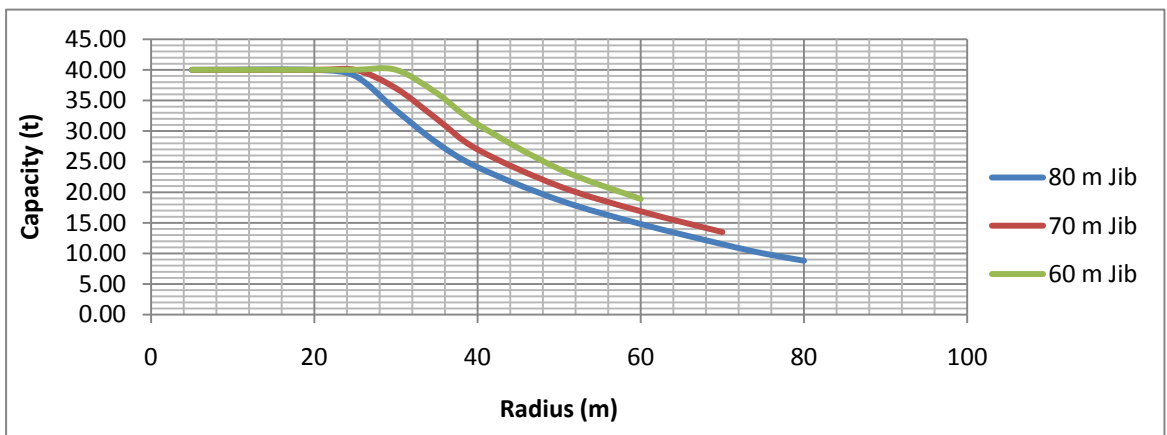
2-Fall

Jib	Max. Capacity		[t] x [m]										
	[m]	[t]	[m]	20	25	30	35	40	50	60	70	75	80
80.0	20.0 t	32.3	20.0	20.0	20.0	18.2	16.6	13.5	11.8	10.6	10.0	9.2	
70.0	20.0 t	38.2	20.0	20.0	20.0	20.0	20.0	16.8	14.6	13.2			
60.0	20.0 t	46.8	20.0	20.0	20.0	20.0	20.0	19.6	16.7				



4-Fall

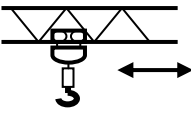
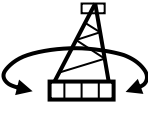
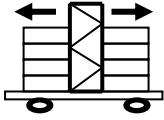
Jib	Max. Capacity		[t] x [m]										
	[m]	[t]	[m]	20	25	30	35	40	50	60	70	75	80
80.0	40.0 t	24.2	40.0	39.0	33.4	28.1	24.1	18.7	14.8	11.5	10.0	8.8	
70.0	40.0 t	26.1	40.0	40.0	37.0	32.0	27.0	21.0	16.9	13.5			
60.0	40.0 t	32.2	40.0	40.0	40.0	36.2	31.1	23.8	18.9				



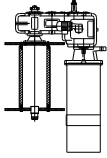
BK 1000-40

2/4 - Fall

| Speed

Speed	480 V			
	60 Hz			
	Motor	13.2 kW	3 x 5.3 kW	2 x 9.0 kW
	Speed	48.0 - 96.0 m/min	0.83 rpm	30.0 m/min

| Power

Hoist Unit		158.4 (192.8 kW / 241 kVA)
------------	--	----------------------------

| Counterweight

All Lengths	60.0 t
-------------	--------

| Hoist unit 158 S12.5 L400

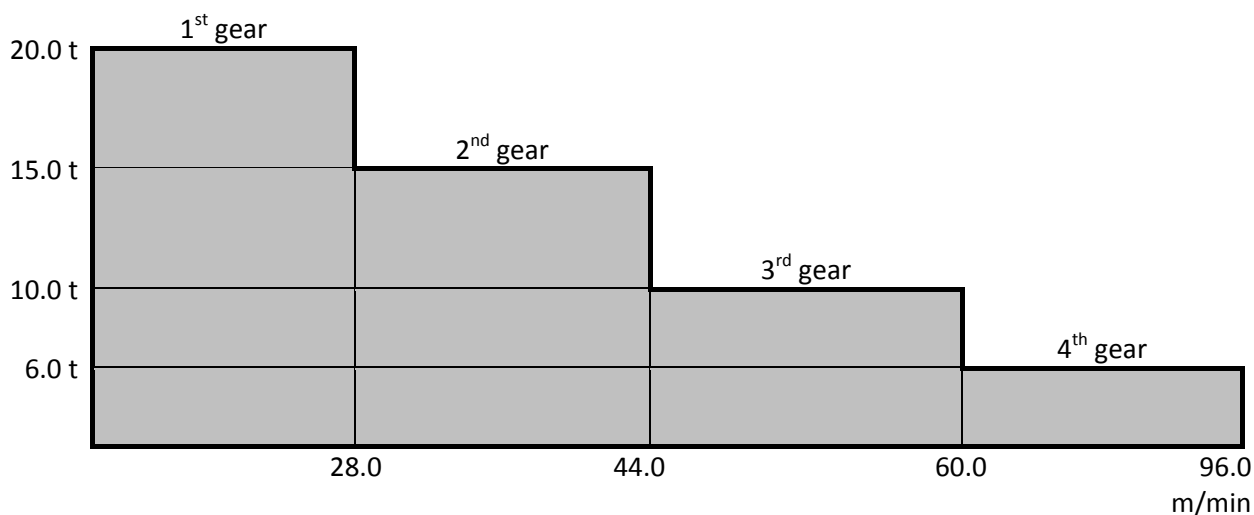
Hoist Unit 158 S12.5 L400

158 kW AC Slipring motor with 4-step gearbox (remote control) eddy current brake for precision hoisting with reduction of 1:10.

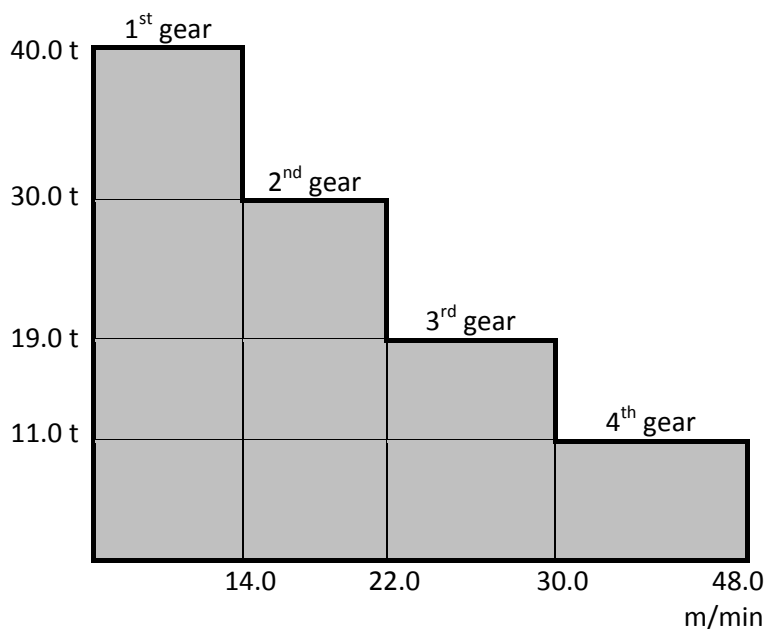
Equipment: double shoe brake with automatic adjustment and brake lining wear and tear control, control cabinet – contactor controlled, (PLC control by request) separate resistor cabinet, hoist limit switch grooved drum for hoist rope $\phi 28 \text{ mm}$ diameter, on erection frame ready for operation.

| Max. Hook height

2-Fall / Max. Hook height = 200.0 m



4-Fall / Max. Hook height = 100.0 m



Subject to modification without prior notice
Edition May. 2008

TOWER CRANE

Obendreherkran / Grues à partie tournante
supérieure / Верхнеповоротные краны

BK 1000-40

2/4 - Fall

Tower Crane BK 1000-40