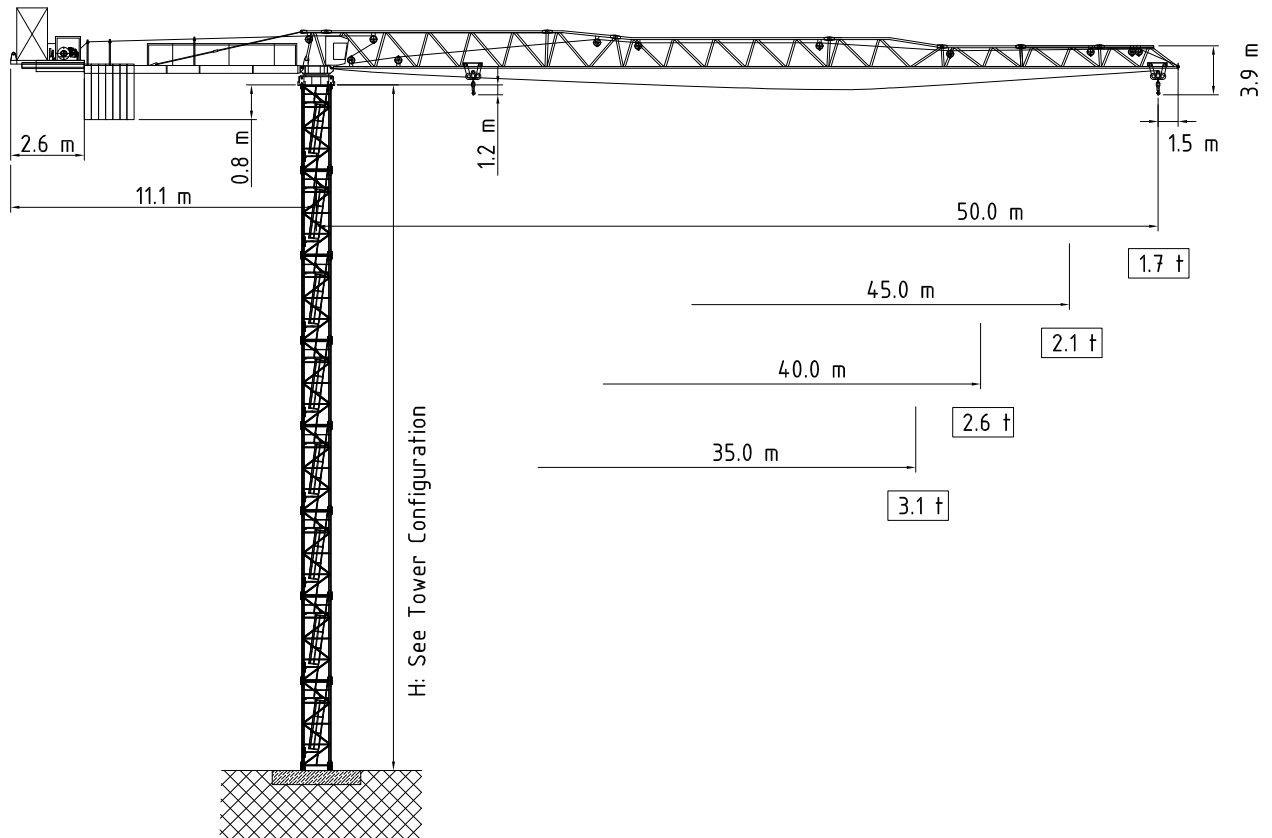


FLAT-TOP CRANE

Flat-Top-Kran / Grues Flat-Top
Подъемные краны без оголовка башни

BK 110-06

2 - Fall



TÜV - Certificate

F.E.M. 1.001-1987
DIN 15018 H1 - B3

Subject to modification without prior notice
Edition Mar. 2009

Flat-Top Crane BK 110-06

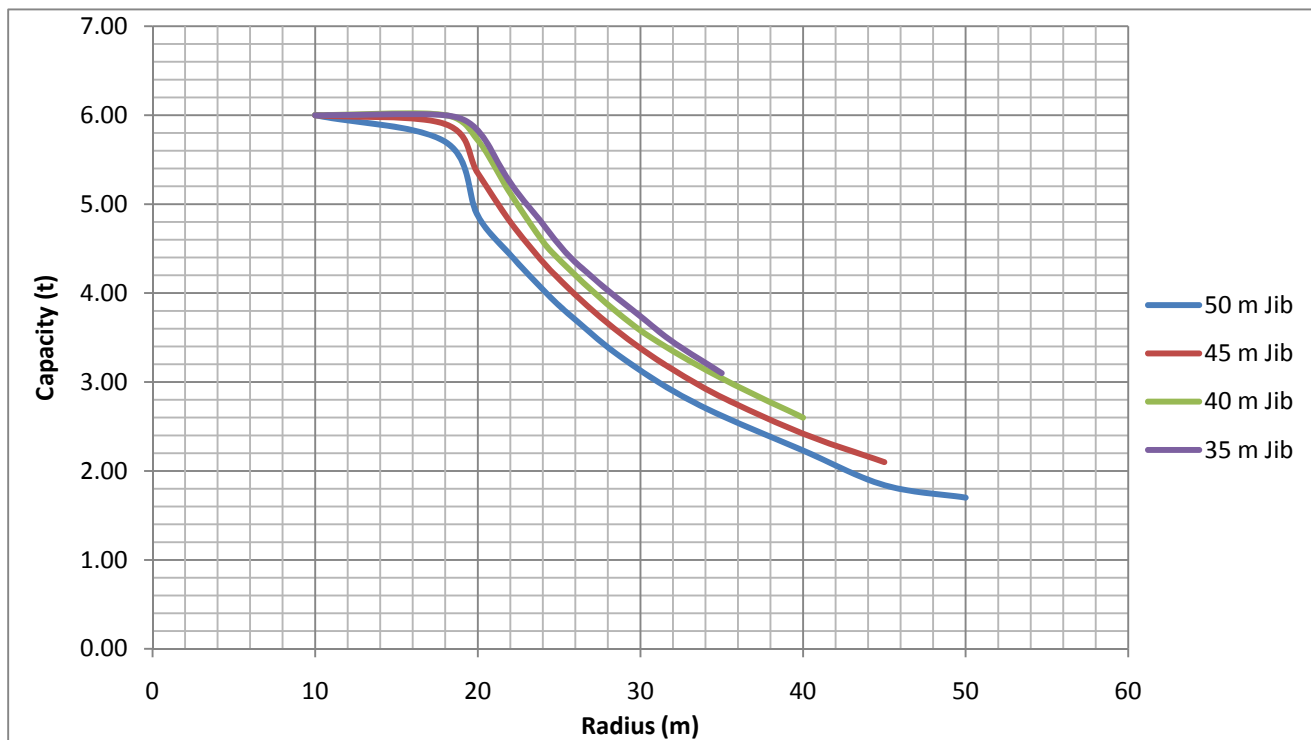
BK 110-06

2 - Fall

| Radius and Capacity

2-Fall

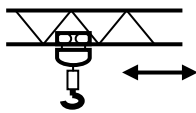
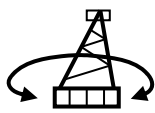
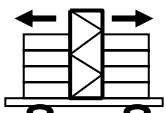
Jib [m]	Max Capacity [ton]	m x t											
		20	22	24	25	26	28	30	32	35	40	45	50
50 m Jib	6.0 t (16.7 m)	4.87	4.43	4.04	3.86	3.70	3.39	3.13	2.90	2.62	2.23	1.84	1.70
45 m Jib	6.0 t (17.8 m)	5.35	4.80	4.35	4.16	3.98	3.66	3.38	3.14	2.83	2.42	2.10	
40 m Jib	6.0 t (18.9 m)	5.72	5.12	4.58	4.38	4.20	3.87	3.58	3.35	3.04	2.60		
35 m Jib	6.0 t (19.2 m)	5.83	5.24	4.78	4.54	4.35	4.03	3.74	3.45	3.10			



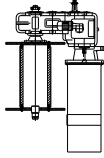
BK 110-06

2 - Fall


| Speed

Speed	400 V			
	50 Hz			
	Motor	5.5 kW	2 x 3.5 kW	2 x 5.5 kW
	Speed	$v = 11.0 - 33.0 - 66.0$ m/min	0.81 rpm	$v = 25.0$ m/min

| Power

Hoist Unit		400 V / 50 Hz
		24.0 kW (34.4 kW - 43.0 kVA)

| Hoist Drum

HH max.		2-Fall / 150.0 m 4-Fall / 75.0 m
---------	---	-------------------------------------

| Counterweight

All Lengths	50.0 m Jib	12.60 ton
	45.0 m Jib	11.55 ton
	40.0 m Jib	11.55 ton
	35.0 m Jib	10.50 ton

FLAT-TOP CRANE

Flat-Top-Kran / Grues Flat-Top
Подъемные краны без оголовка башни

BK 110-06

2 - Fall

Flat-Top Crane BK 110-06

BKT International GmbH
Germany

Distributed by

 **BKT**
Tower Cranes
www.bkcrane.com