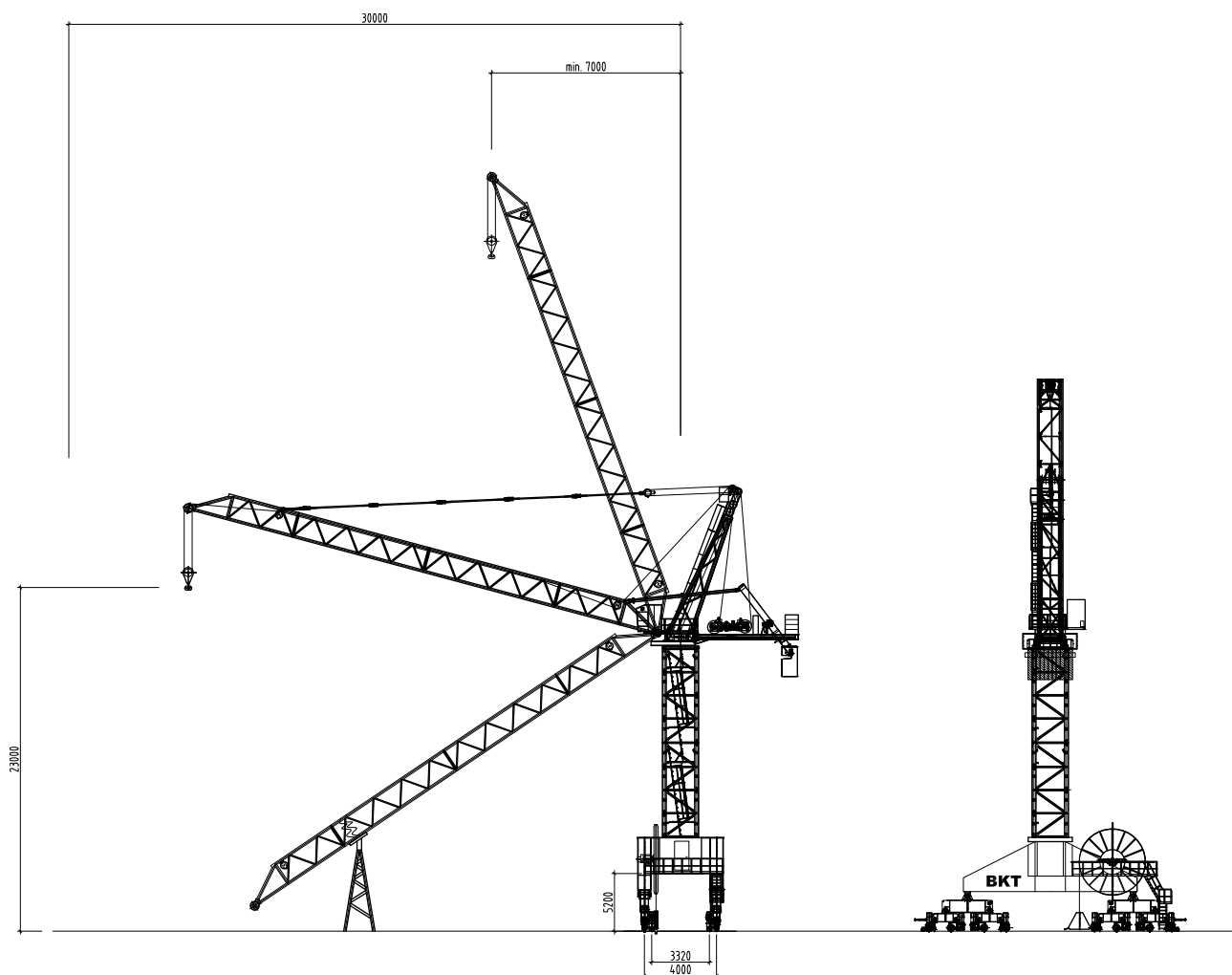


PORTAL CRANE

BN 130-Portal



Portal Crane BN 130-1Portal

Subject to modification without prior notice
Edition Jan. 2009



TÜV-Certificate

F.E.M. 1.001-1987

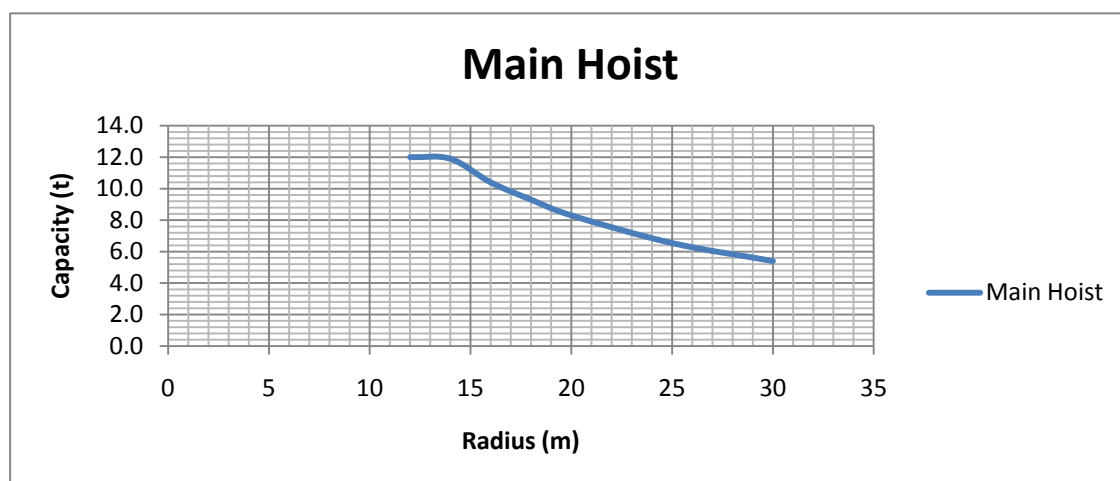
DIN 15018 H1 - B3

PORTAL CRANE

BN 130-Portal

| Radius and Capacity

Jib	Max. Capacity	m × t						
m	t	12	14	16	18	20	25	30
Main Hoist	12.0	12.0	11.9	10.4	9.3	8.3	6.5	5.4




| Speed

Speed	380 V			
	50 Hz			
	Motor	24.0 W	2 x 3.6 kW	2 x 5.5 kW
	Speed	28.0 m/min	1.5 rpm	0 - 25.0 m/min

PORTAL CRANE

BN 130-Portal

| Hoist Unit

Main Hoist		28 kW (20.0 - 40.0 m/min)
------------	---	---------------------------

| Main Power

Power	380 V, 3PH, 50 Hz
-------	-------------------

Portal Crane BN 130-1Portal

BKT International GmbH
Germany

Distributed by